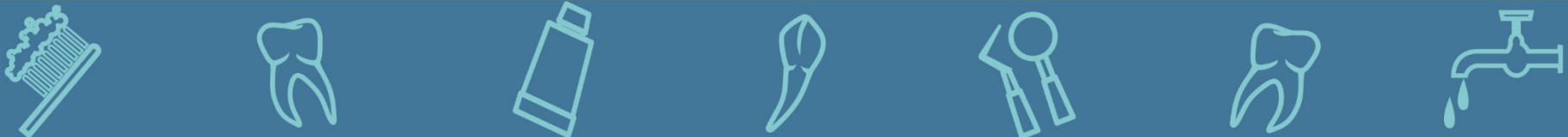


Older Adult Surveillance

Jennifer Wahby
Senior Health Services Analyst
Public Health Dental Program



Collaborative Partnerships



Funding Source

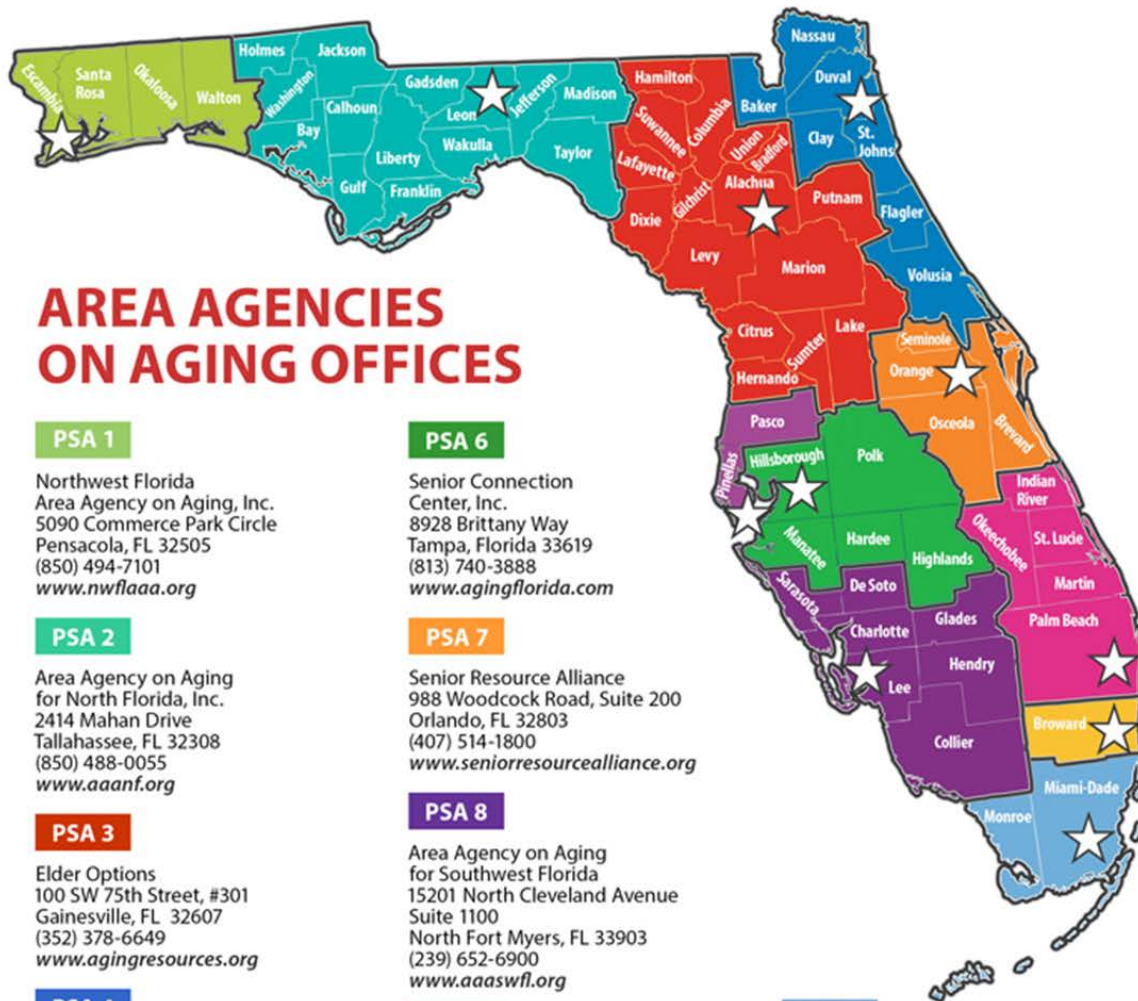
- Health Resources and Services Administration (HRSA)
 - State Oral Health Workforce Grant
 - Federal Fiscal Year 2015-2016
 - Cost of Project: Approximately \$45,000



Sample Population

- Congregate Meal Sites
- Prev Med Nursing Home pilot





AREA AGENCIES ON AGING OFFICES

PSA 1

Northwest Florida
Area Agency on Aging, Inc.
5090 Commerce Park Circle
Pensacola, FL 32505
(850) 494-7101
www.nwflaaa.org

PSA 2

Area Agency on Aging
for North Florida, Inc.
2414 Mahan Drive
Tallahassee, FL 32308
(850) 488-0055
www.aaanf.org

PSA 3

Elder Options
100 SW 75th Street, #301
Gainesville, FL 32607
(352) 378-6649
www.agingresources.org

PSA 4

ElderSource,
The Area Agency on Aging
of Northeast Florida
10688 Old St Augustine Road
Jacksonville, FL 32257
(904) 391-6600
www.myeldersource.org

PSA 5

Area Agency on Aging
of Pasco-Pinellas, Inc.
9549 Koger Boulevard,
Gadsden Bldg., Suite 100
St. Petersburg, FL 33702
(727) 570-9696
www.agingcarefl.org

PSA 6

Senior Connection
Center, Inc.
8928 Brittany Way
Tampa, Florida 33619
(813) 740-3888
www.agingflorida.com

PSA 7

Senior Resource Alliance
988 Woodcock Road, Suite 200
Orlando, FL 32803
(407) 514-1800
www.seniorresourcealliance.org

PSA 8

Area Agency on Aging
for Southwest Florida
15201 North Cleveland Avenue
Suite 1100
North Fort Myers, FL 33903
(239) 652-6900
www.aaaswfl.org

PSA 9

Area Agency on Aging of Palm
Beach/Treasure Coast,
4400 N. Congress Avenue
West Palm Beach, FL 33407
(561) 684-5885
www.youragingresourcecenter.org

PSA 10

Aging and Disability Resource Center
of Broward County, Inc.
5300 Hiatus Road
Sunrise, FL 33351
(954) 745-9567
www.adrcbroward.org

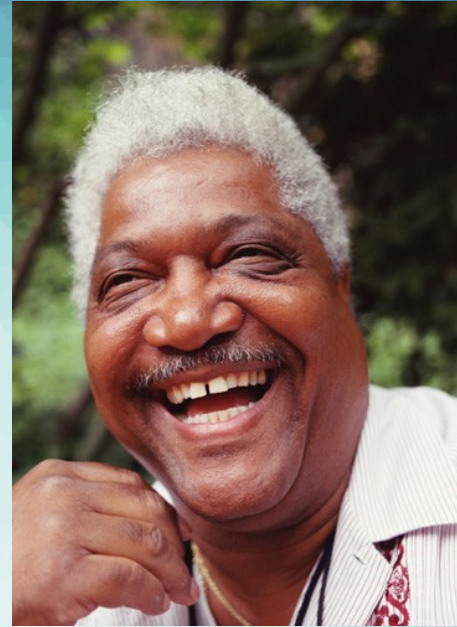
PSA 11

Alliance for Aging, Inc.
760 NW 107th Avenue
Suite 214, 2nd Floor
Miami, FL 33172
(305) 670-6500
www.allianceforaging.org

PSA - Planning and Service Area

Oral Health Surveillance BSS

1. Dentures and denture use
2. Number of natural teeth
3. Untreated decay
4. Root fragments
5. Need for periodontal care
6. Suspicious soft tissue lesions
7. Urgency of need for dental care



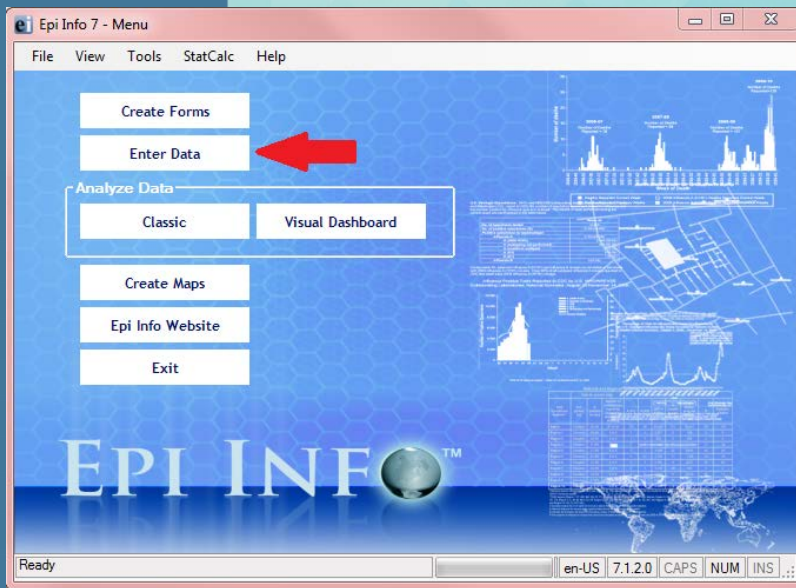
FDHA Hygienist Training

- October Training at the Florida Dental Hygiene Association symposium
 - http://www.fdha.org/General_Information.html
- ASTDD Basic Screening Survey

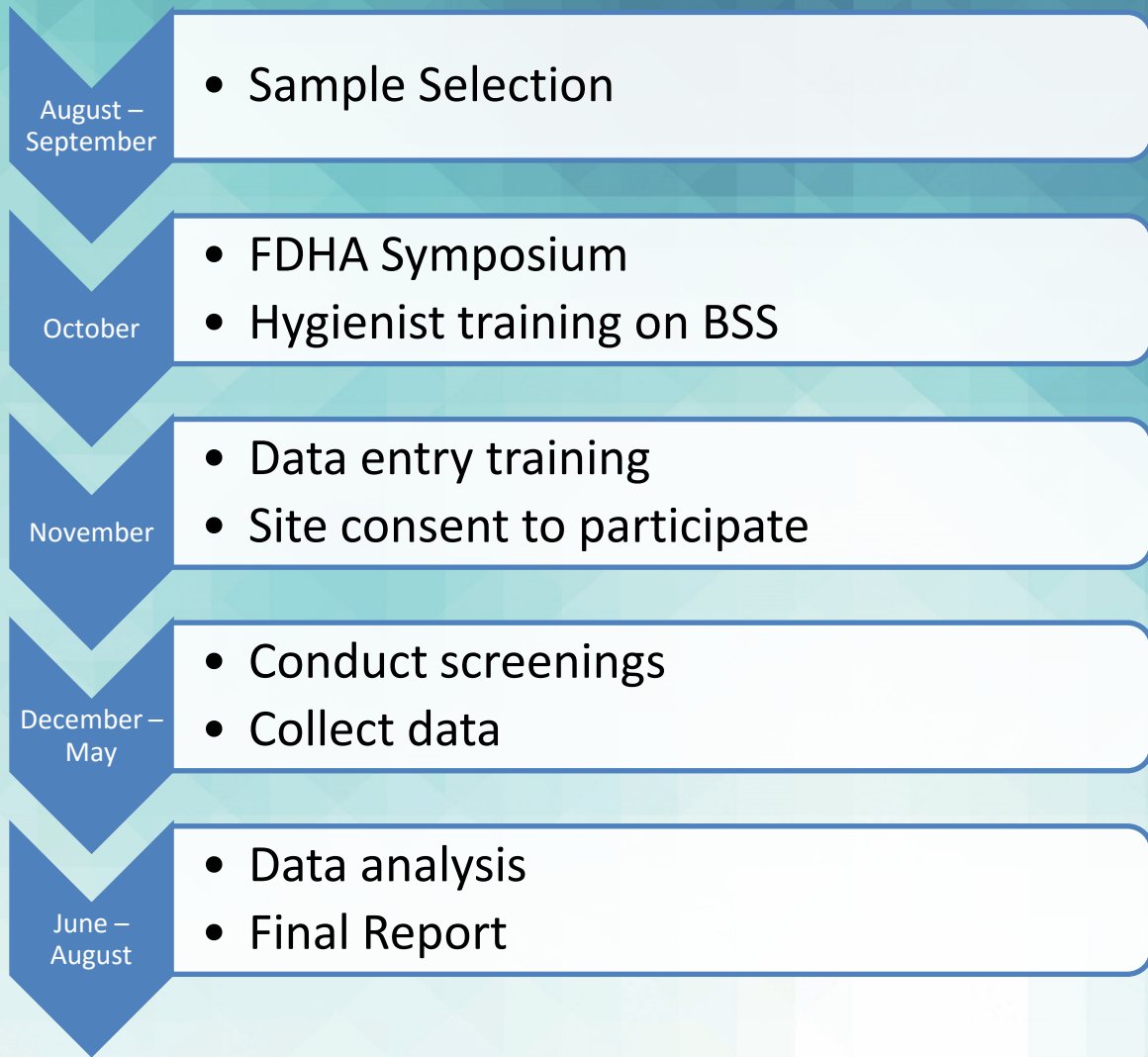


Electronic Data Collection

- Epi Info
- Surface Pro tablets



Timeline



Thank You

Jennifer Wahby

Jennifer.Wahby@flhealth.gov

(850) 245-4444 Ext. 2821

