

Dental-Related Use of Hospital Emergency Departments by Hispanics and Non-Hispanics in Florida

Claudia A. Serna, PhD, MPH, BDS

Oscar Arevalo, DDS, ScD, MBA, MS,

Scott L. Tomar, DMD, DrPH

Introduction

- ❖ Disparities in oral health exist among racial and ethnic groups.
- ❖ Hispanics face many disadvantages when it comes to access to care. Thus, the hospital emergency department may become a place where many receive dental care.
- ❖ Most hospitals do not have the facilities or trained staff to provide comprehensive dental care. Therefore, patients only receive palliative treatment; i.e. antibiotics or pain medication.
- ❖ There is little research focused on ED utilization for dental conditions by ethnic groups in Florida.

Methods

- ❖ Data for dental related visits were drawn from the ambulatory ED discharge records compiled by the Florida's Agency for Health Care Administration (AHCA) for the years 2013 to 2015.
- ❖ Patient's county of residency at the time of the claim was used to divide the state into eight geographic regions.
- ❖ Visits were defined by the admitting diagnosis and the ED physician's primary diagnosis using ICD-9 and 10-CM codes.
- ❖ Rates by ethnicity and region were calculated.
- ❖ Percentage distribution visits for Hispanics and non-Hispanics were calculated by primary payer, day of the week, and hour of arrival.

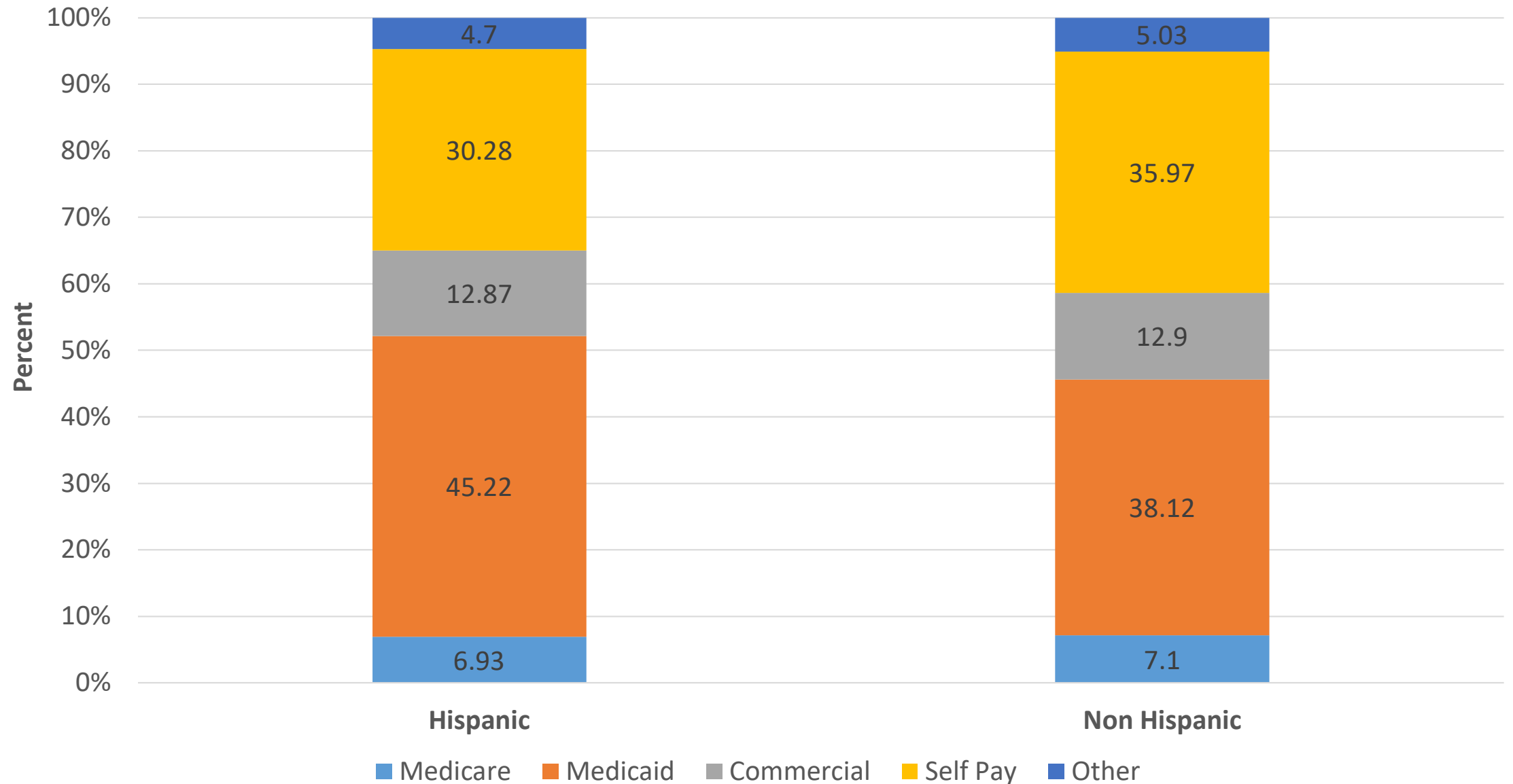
Geographic Regions



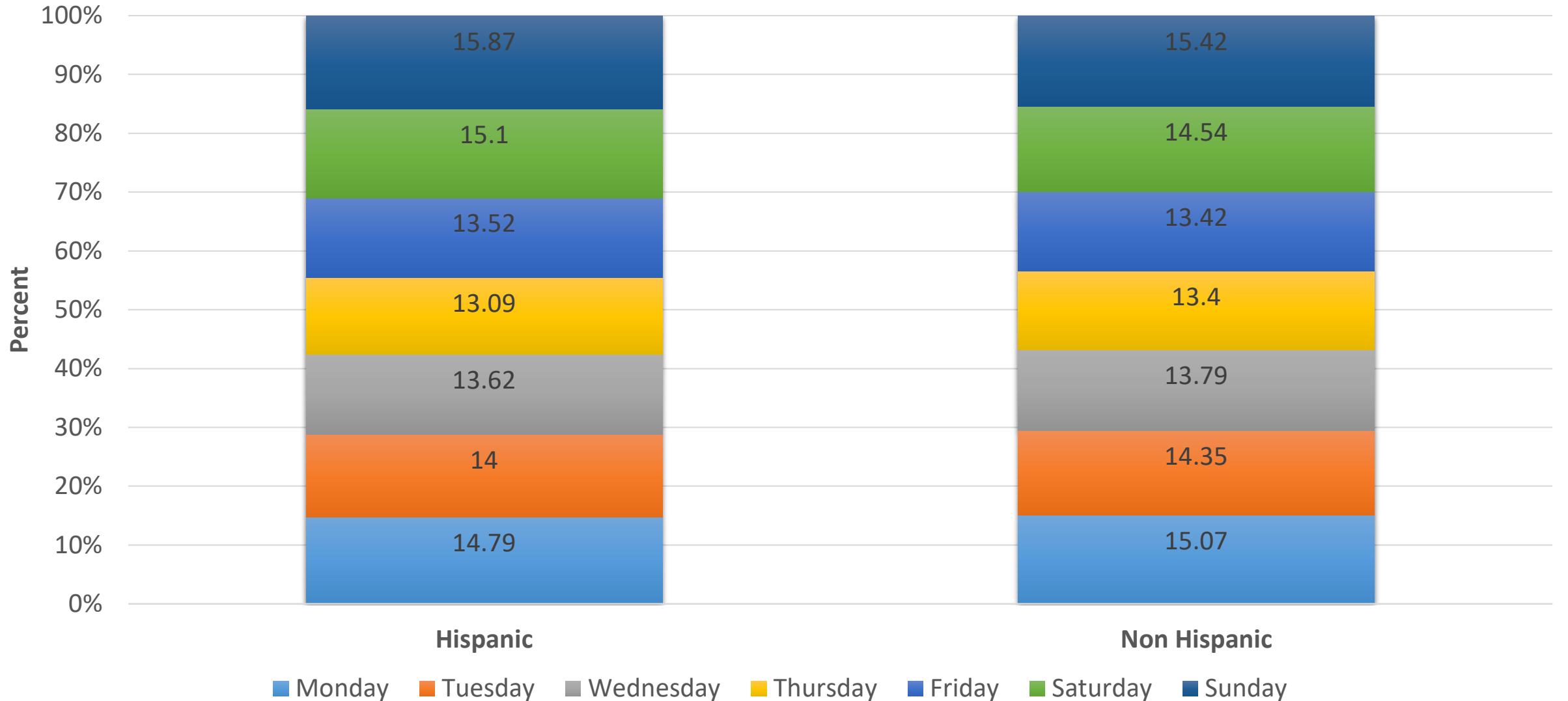
Number and rate per 10,000 of dental-related visits to hospital emergency departments by region

Florida Region	Hispanic Total ED for dental complaints (2013, 2014, 2015)	Non-Hispanic Total ED for dental complaints (2013, 2014, 2015)	Total Hispanic Population (2013, 2014, 2015)	Total Non-Hispanic Population (2013, 2014, 2015)	Hispanic ED visits for dental complaints per 10,000 residents	Non-Hispanic ED visits for dental complaints per 10,000 residents
NW	702	39,742	178,282	2,919,892	39.4	136.1
NE	1,799	49,091	381,575	4,338,334	47.1	113.2
NC	886	33,614	202,314	2,565,123	43.8	131.0
CW	9,931	72,690	1,868,095	9,547,044	53.2	76.1
CE	3,591	42,468	569,155	4,012,969	63.1	105.8
C	18,392	80,251	2,491,896	7,973,972	73.8	100.6
SW	4,443	23,935	788,431	2,873,462	56.4	83.3
SE	22,823	66,446	7,607,111	10,410,040	30.0	63.8
Unknown	1,533	16,925	–	–	–	–
Total	64,100	425,162	14,086,859	44,640,836	45.5	95.2

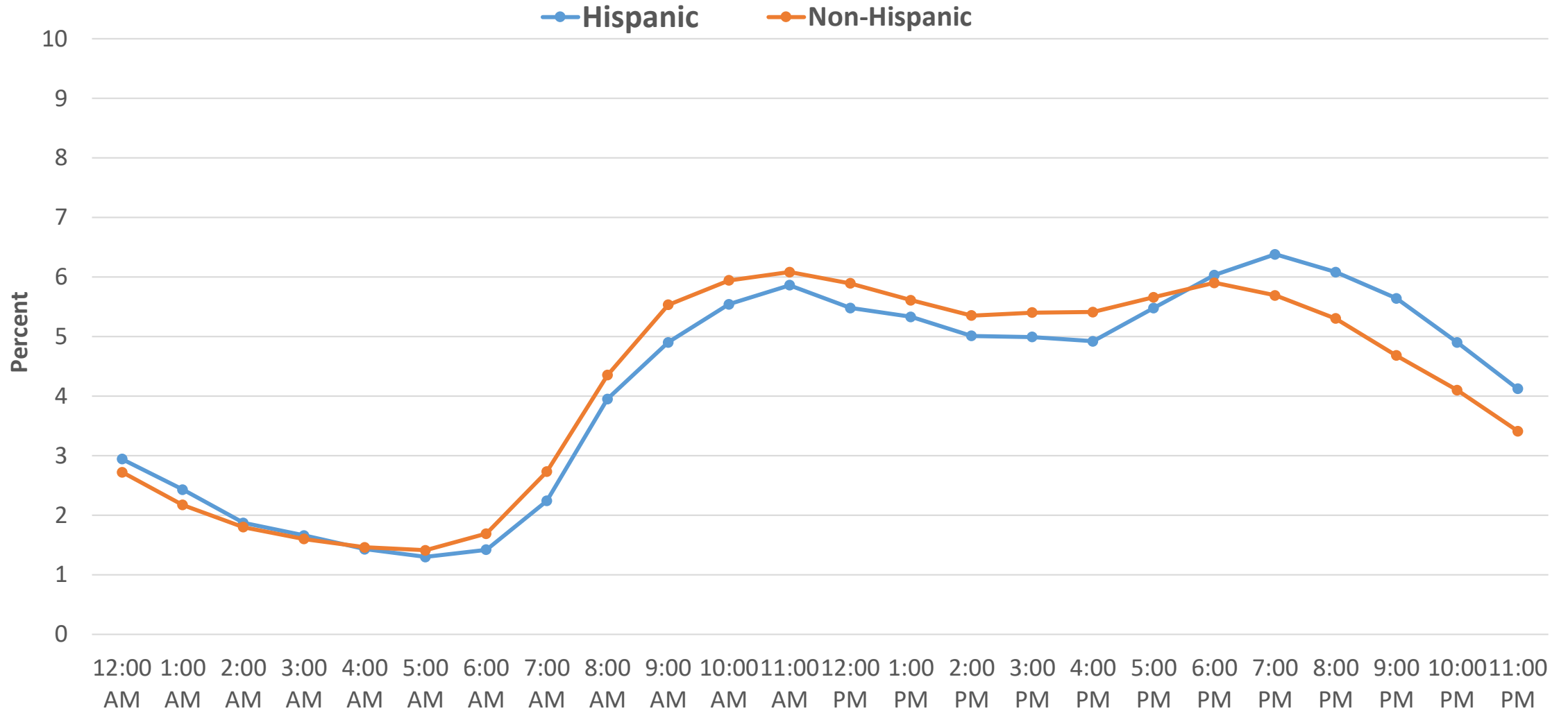
Percent distribution of dental-related visits to hospital emergency departments by primary payer



Percent distribution of dental-related visits to hospital emergency departments by day of the week



Percent distribution of dental-related visits to hospital emergency departments by hour of arrival



(p < .0001)

Conclusions

- ❖ Rates of ED utilization for dental problems were lower for Hispanics than for non-Hispanics in Florida.
- ❖ From a public health perspective, even a small reduction targeting Hispanics might result in substantial cost savings and improvement both dental and overall health.
- ❖ Effective interventions need to be developed in the context of a social–ecological model to better take in consideration personal and environmental factors.

Thank you!