

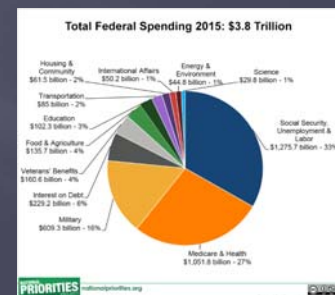
# WIC ORAL HEALTH PROGRAM IN ALACHUA COUNTY FL

*Jaana Gold, DDS, PhD, MPH, CPH*

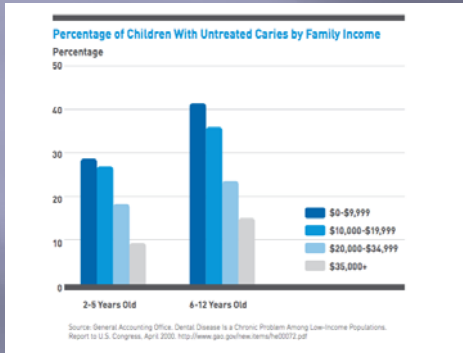
*Department of Community Dentistry and Behavioral Science,  
University of Florida College of Dentistry*

## WIC Program

- ✓ The Special Supplemental Nutrition Program for Women, Infants, and Children (WIC) providing supplemental foods, health care referrals, and nutrition education for low-income pregnant, breastfeeding, and postpartum women, and to infants and children up to age 5 at nutritional risk.
- ✓ Federal program under US Dept of Agriculture, Food and Nutrition Service
- ✓ In 2012, 8.9 mill women, infants and children were served by 6.8 billion of funding (5% of F&A budget)
- ✓ In 2016, 5,389 WIC eligibles served in Alachua (66%)
- ✓ In 2016, ~0.5 mill WIC eligibles served in Florida (72%)



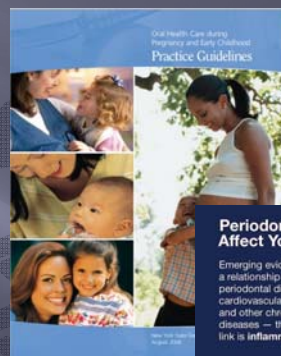
## Key Facts of WIC population



- ✓ Many low income families are at high risk for caries, suffer from untreated oral diseases, poor access or lack of dental insurance
- ✓ Some dentists are not comfortable with WIC populations (young children and pregnant women) or do not accept Medicaid insurance
- ✓ WIC program provides easy “one-point, meet them where they are” access to vulnerable population at risk for oral diseases

## Key Facts of WIC population

- ✓ Dental caries is an infectious disease process - mother/child bacteria transmission
- ✓ Oral diseases may affect the health of the pregnant woman and the unborn child
- ✓ Mothers play a major role in establishing good oral health habits for their children



### Periodontal Disease Can Affect Your Heart & Body

Emerging evidence shows a relationship between periodontal disease, cardiovascular disease and other chronic diseases – the common link is inflammation.



The presence of periodontal diseases may be associated with heart attacks, strokes, kidney disease, diabetes, preterm births and prosthetic joint complications.

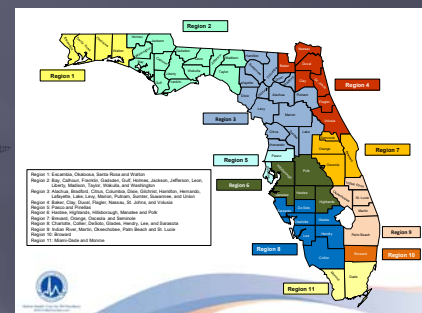
## Early Childhood Caries (ECC)

- ✓ Dental caries is the most prevalent chronic infectious disease and unmet health need, especially among low-income children
- ✓ Advanced cases or cases involving very young children usually require general anesthesia or sedation to treat / hospital OR
- ✓ Advanced cases can cause systemic infection and even death
- ✓ Caries in the primary dentition correlates with caries in the permanent dentition
- ✓ ECC is preventable!



## Florida Issues

- ✓ Large Medicaid, low-income, and immigrant populations
- ✓ Only ~10% of Florida's dentists participate in Medicaid
- ✓ In 2011, only ~4% of adult Medicaid patients received any dental care (minimal benefits; extractions, dentures)
- ✓ In 2015, 35% of Florida's Medicaid eligible children received any dental services and 31% received preventive dental care
- ✓ In 2013, total ER costs due to preventable dental conditions in FL were \$191,73 mil ↑



Florida Public Health Institute 2012; 2014  
 Pew Center, 2014  
 Tomar S 2016

## Preventive Dental Services in Children in Medicaid 2014

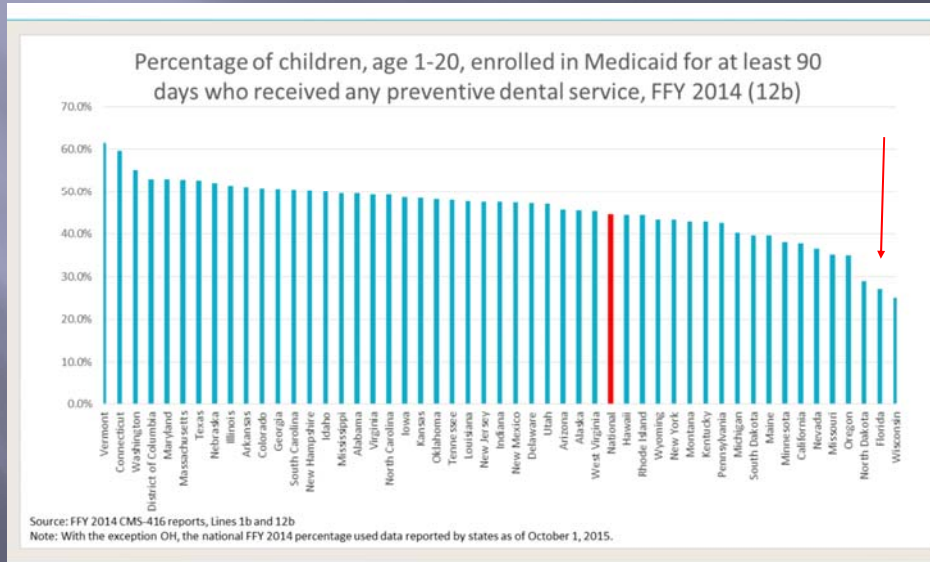
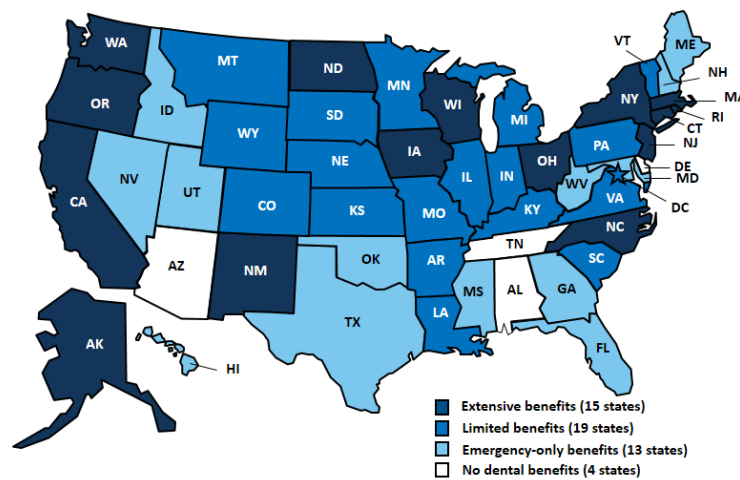


Figure 2

### Medicaid Coverage of Adult Dental Benefits, February 2016



SOURCE: Medicaid Adult Dental Benefits: An Overview, Center for Health Care Strategies, Inc., February 2016,  
<http://www.chcs.org/resource/medicaid-adult-dental-benefits-overview/>

THE HENRY J.  
KAISER  
FAMILY  
FOUNDATION



## WIC Oral Health Program



- ✓ Community-based preventive oral health program to provide preventive services for women, infants and children enrolled in WIC in Alachua County FL
- ✓ Implemented in May 2013
- ✓ Collaboration between FL DOH in Alachua County, WIC Program, UF College of Dentistry, Department of Community Dentistry & Behavioral Science, Department of Pediatric Dentistry, ACORN clinic.

## WIC Oral Health Program Goals

- ✓ Improve the oral health of women and children in the North Central Florida WIC Program
  - ✓ Reduce/prevent Early Childhood Caries (ECC)
  - ✓ Improve access to dental care
  - ✓ Reduce oral health disparities
- ✓ Support the mission of WIC



## WIC Oral Health Program

- Provides preventive services in the WIC Clinics for WIC clients
- Dental screenings for children, women, caregivers
- Risk assessments
- Oral Health education
- Fluoride varnish and Silver Diamine Fluoride treatments for children
- Recalls and referrals to dental home/dental care
- Collaboration with the local dental clinics and providers
- No fees for WIC client to participate in this program



## Identify high risk children!



## Fluoride Varnish Treatment



- NaF varnish containing 2.26% F applied topically to the teeth
- Safe, easy and efficient application
- 2-4 x/year applications

## Silver Diamine Fluoride Treatment

- ✓ Biannual SDF treatments to arrest caries, reduce/prevent pain and infections
- ✓ Safe, easy and efficient treatment of untreated cavitated lesions



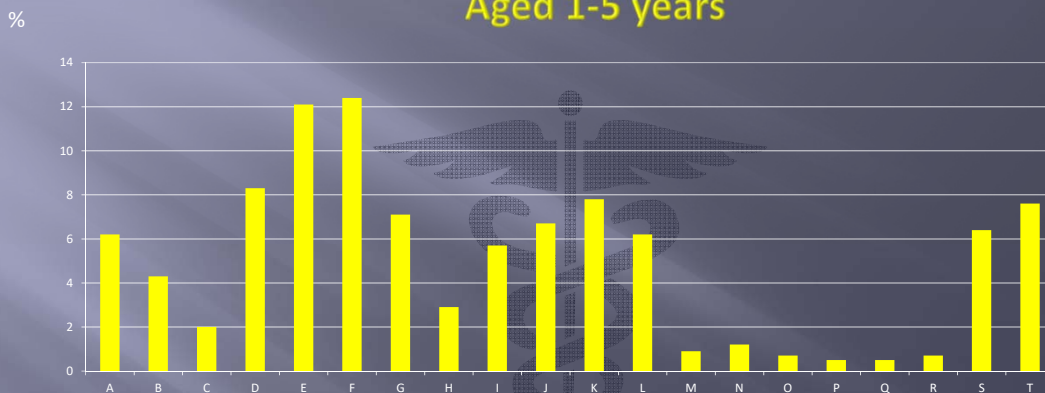


## Caries Prevalence in WIC Children by Age (n=295)

1 yr	2 yrs	3 yrs	4 yrs	5 yrs
9.3%	35.4%	39.5%	58.0%	59.1%

- Untreated caries rate in WIC children increased by age
- Caries prevalence among Alachua WIC 3-5 year olds = 52.2%
- NHANES national data for 3-5 year olds = 23.8%
- HP 2020 target for 3-5 year olds = 21.4%
- Oral health needs are high among WIC children in Alachua County FL

## Tooth-Specific Caries Distribution in WIC children Aged 1-5 years



Dental caries was mostly observed in the primary maxillary ant. teeth (33%), followed by lower primary molars (27.3%), upper primary molars (24%) and lower ant. teeth with 3.4%



## Insured WIC Women

- ~57% of all women under Medicaid
- ~61% of **pregnant** WIC women had Medicaid
- Only 3.5% of all pregnant women were eligible for comprehensive dental care under Medicaid (<21 yrs).
- Many pregnant women at WIC did not have dental insurance.



## Conclusions

- ✓ Caries prevalence is high in WIC children in the WIC Oral Health Program in North Central FL
- ✓ Many WIC women lack dental insurance
- ✓ Children and women have a great need for preventive services, dental care and dental home
- ✓ Preventive Oral Health Program can be integrated into local WIC programs to identify children and women in need for dental care and prevention
- ✓ Collaborating with WIC and other primary care providers can help to provide preventive dental services for at-risk populations
- ✓ WIC Oral Health Program can serve as a model for other health programs to improve the health of the vulnerable populations in diverse communities

Like the Facebook page:  
<http://www.facebook.com/oralhealthforwomen>



If questions or comments, contact  
Dr. Jaana Gold  
Department of Community Dentistry and Behavioral Science  
1329 SW 16th Street, Room 5185  
PO BOX 103628  
Gainesville, FL 32610-3628  
Main office: 352-273-5971  
Cell: 352-275-9759  
Email: [jgold@dental.ufl.edu](mailto:jgold@dental.ufl.edu)