

Adobe Photoshop CS5 – CC 2019

Spot Healing Brush and Red Eye Tool



Adobe Photoshop: Spot Healing Brush and Red Eye Tool

45 Minutes

The workshop will cover creating and manipulating basic graphics in Adobe Photoshop, and sorting and tagging in Adobe Bridge. Topics include an overview of common toolbar features, creating images using layers, and adding text to images. This workshop assumes no experience with Photoshop or Bridge but requires a working knowledge of the Microsoft Windows operating system.

Worksheets:

Repairing Red Eye.....	3
What if that didn't work	3
Repairing Spots, Scratches, or Blemishes.....	4
What if that didn't work	4

Scott Young
Training Specialist, Educational Technologies
Information Technology Training

training.health.ufl.edu
352.273.5051 (O)
352.273.5053 (F)
scott.young@ufl.edu
P.O. Box 100152
Gainesville, FL, 32610-0152



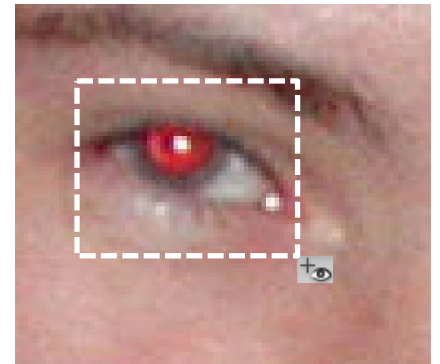
Repairing Red Eye

There are two ways to use the Red Eye Tool (J). Try the first method. If it not to your liking, undo it and try the second. This tool only works on a red-eye and not on blue, green, or yellow-eye as you might get from other animals such as dogs, cats, and horses.

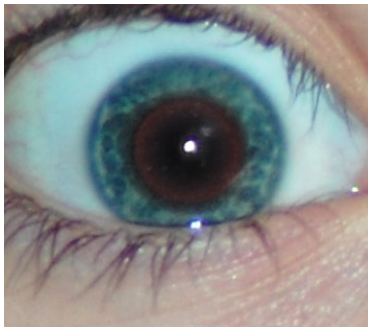


Try the first method. If it not to your liking, undo it and try the second. This tool only works on a red-eye and not on blue, green, or yellow-eye as you might get from other animals such as dogs, cats, and horses.

1. Open redeyeexample.jpg in Photoshop
2. Press Control 0, to zoom into the picture
3. Duplicate your Background layer by going to the Layer drop-down menu and choosing Duplicate Layer. Click OK
4. Choose the red-eye tool (J). It may be behind the spot healing brush tool.
5. Click in the red-eye
or
6. Click and drag to draw a box around the red-eye. Make sure it is large enough, as in the example. If the box is drawn too small all of the red in the eye will not be corrected.



What if that didn't work



If you get something like this, with red remaining all the way around Try upping the pupil size and the darkening amount settings found along the top of the screen in the tool settings.

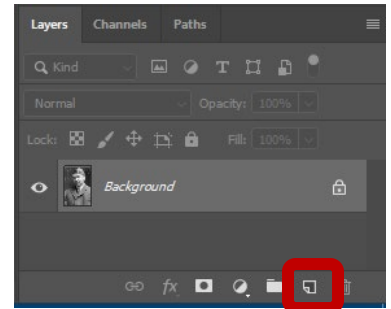
If you get this type of result, with only a spot the rest of the eye looking untouched, use the step 6. This time draw the box larger.




being fixed and method listed in

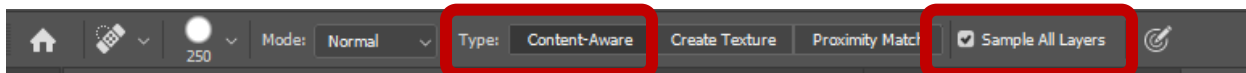
Repairing Spots, Scratches, or Blemishes

1. Open Old Image.jpg in Photoshop.
2. Press Control 0, to zoom into the picture
3. Create a new layer by pressing (Shift+Ctrl+N) or by clicking on the new layer icon in the Layers palette and verify you have the new layer selected.



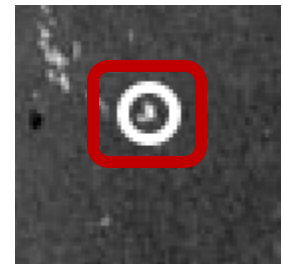
* This will create a blank layer that will collect all of your corrections. This makes it easy to correct corrections that do not look good. You will be able to use your eraser to remove any changes.

4. Choose the Spot Healing Brush Tool (J).  It may be behind the Red Eye tool.
5. In the Options bar, at the top of the window, make sure Sample All Layers is selected and the Type is set to Content-Aware.



6. Adjust the brush size so that it is just slightly larger than the spot you want to repair.

* An easy way to adjust your brush size is to use your [] square bracket keys. The left bracket key [decreases the size of the brush and the right bracket key] increases the brush in size.



7. Cover a spot you want to repair with the cursor and click. Repeat steps 5 and 6 until all of the damage is repaired.

What if that didn't work

- a. Hide the background layer so that you only see the corrections layer
- b. Locate the spot that didn't work
- c. Choose the Eraser tool (E)
- d. Erase the